

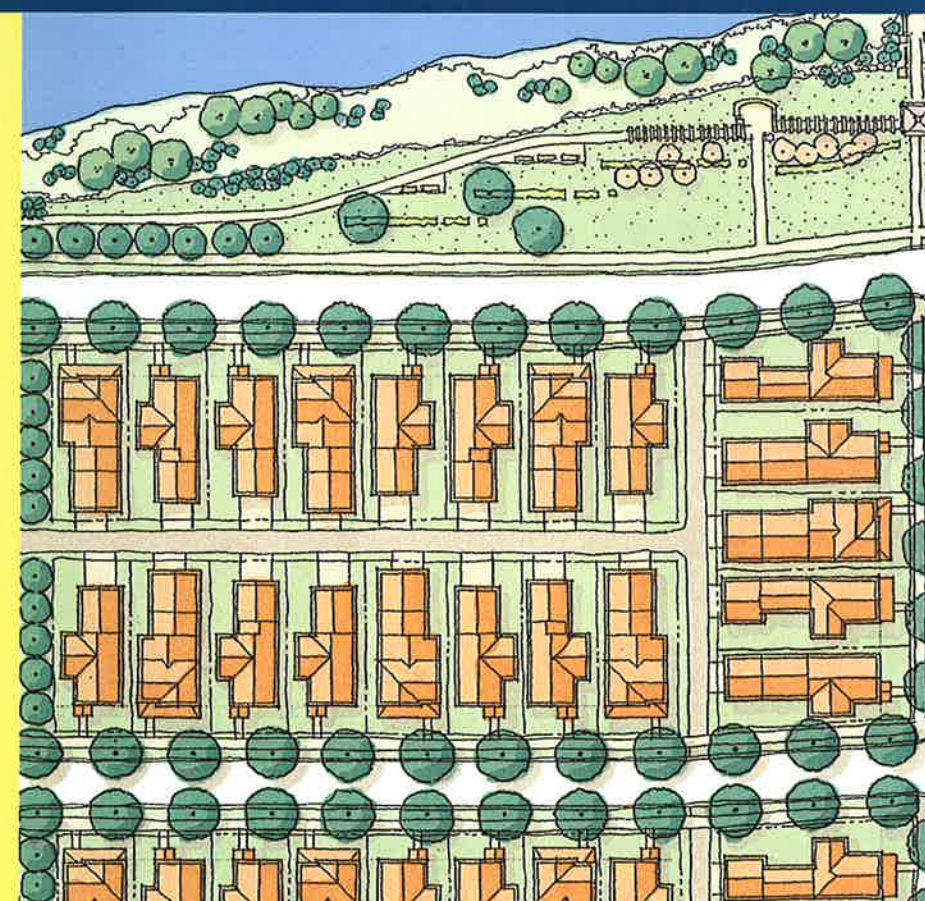
The Water's Edge

MODERN COTTAGE LIVING AT 31ST STREET



PROPOSAL
City of Pittsburgh

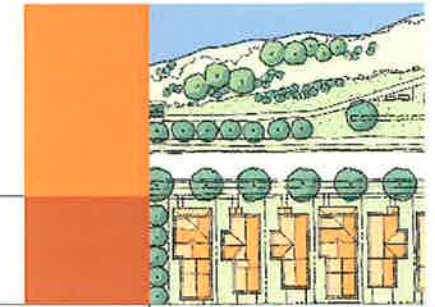
The Rubinoff Company
August 30, 2002



Introduction

The Tow Pound sites numbers 1, 2 and 3 as described in the Request for Proposal offer a wonderful opportunity to develop a waterfront site and build on the uniqueness and diversity of the Strip District and the success of Washington's Landing.

Introduction **Aerial Views of The Water's Edge Site**

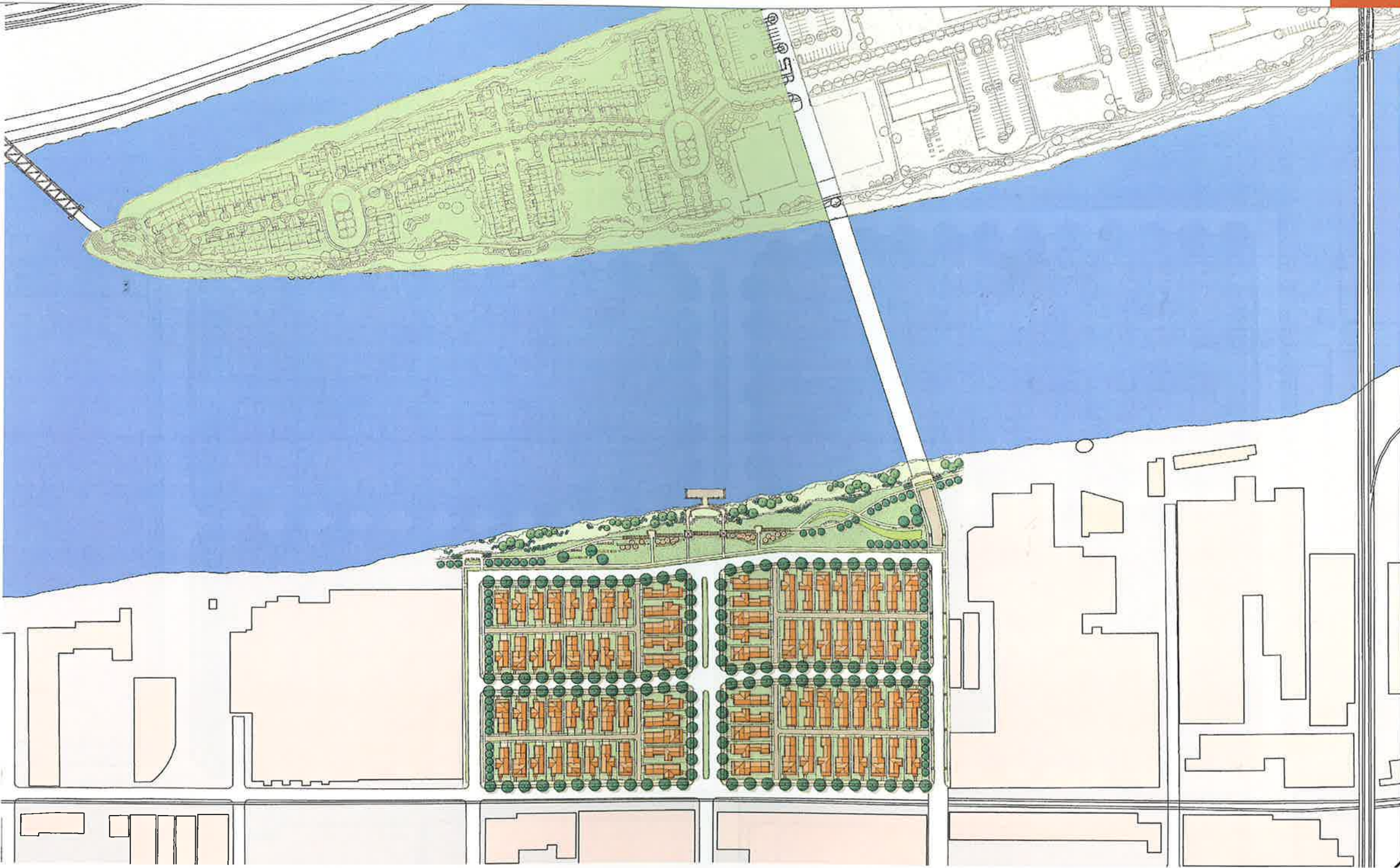


Executive Summary

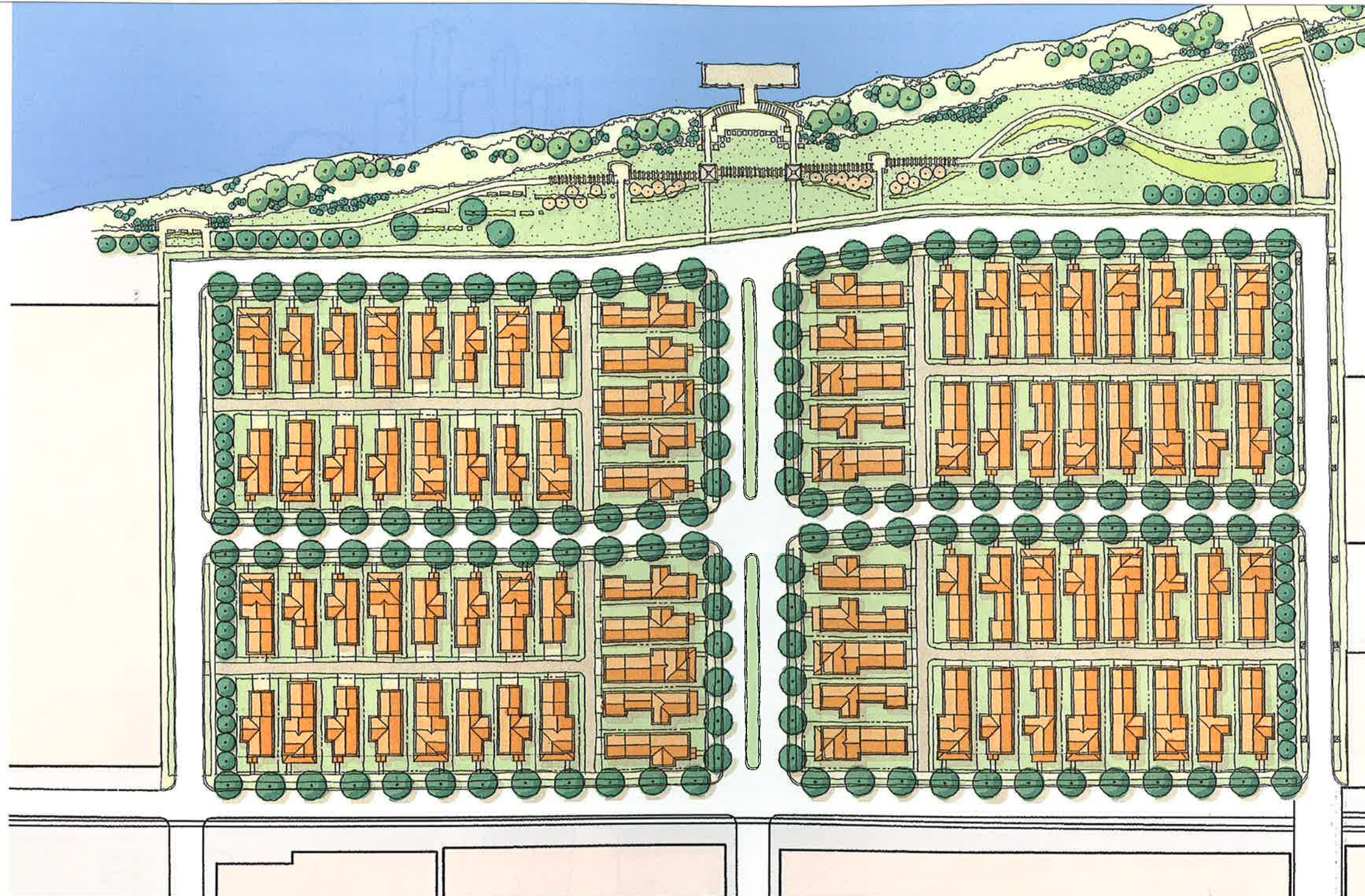
The Rubinoff Company proposes to create a modern village consisting of 84 single family detached cottages for sale. The proposed Water's Edge development will be designed by national and local designers. This proposed Development will build on the success of Washington's Landing and other new housing developments within the City.



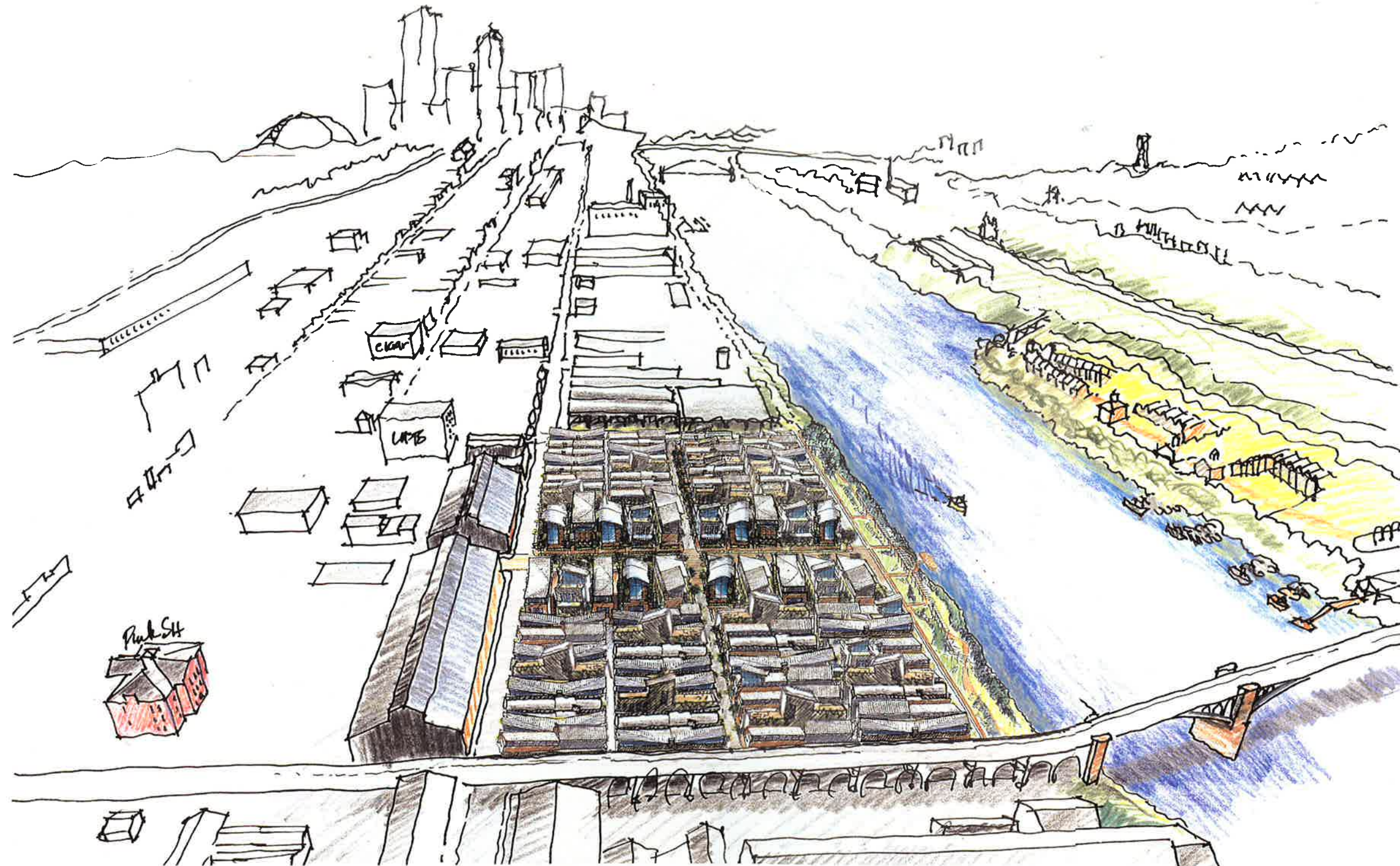
Development Proposal **Drawings**



Development Proposal **Drawings**



Development Proposal **Drawings continued**



Development Proposal **Drawings continued**

